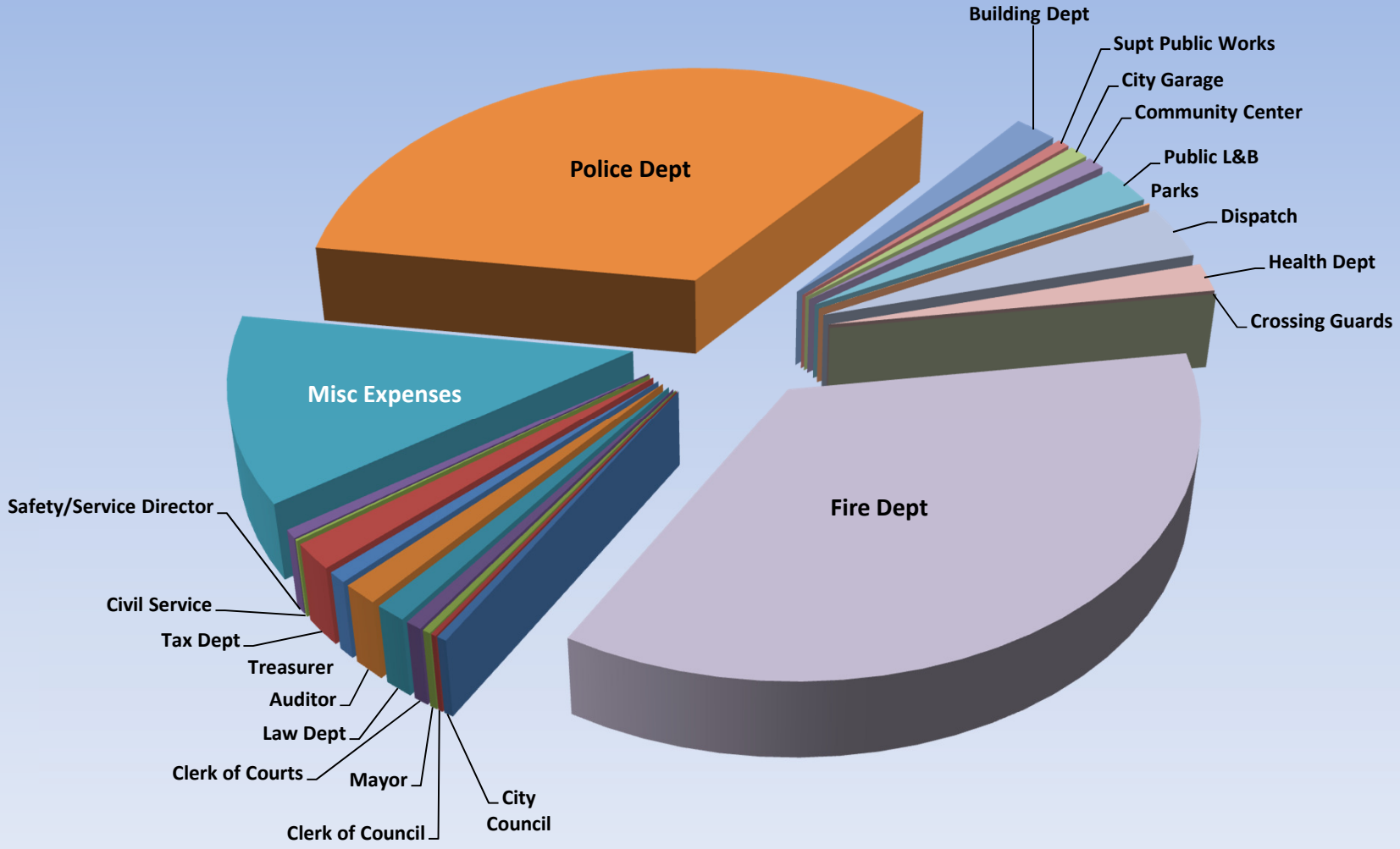


General Fund 2014 Expenditures



City Council	\$75,693	0.37%	Civil Service	\$22,292	0.11%	Parks	\$18,165	0.09%
Clerk of Council	38,903	0.19%	Safety/Service Director	111,360	0.55%	Dispatch	698,125	3.43%
Mayor	61,937	0.30%	Building Department	392,720	1.93%	Health Department	370,696	1.82%
Clerk of Courts	122,477	0.60%	Supt Public Works	114,662	0.56%	Crossing Guards	0	0.00%
Law Department	229,969	1.13%	City Garage	179,279	0.88%	Police Department	6,817,706	33.51%
Auditor	266,026	1.31%	Community Center	165,407	0.81%	Fire Department	7,239,267	35.59%
Treasurer	144,162	0.71%	Public L&B	494,162	2.43%	Misc Expenses	2,438,857	11.99%
Tax Department	340,465	1.67%						

(Includes actual expenses and encumbrances)